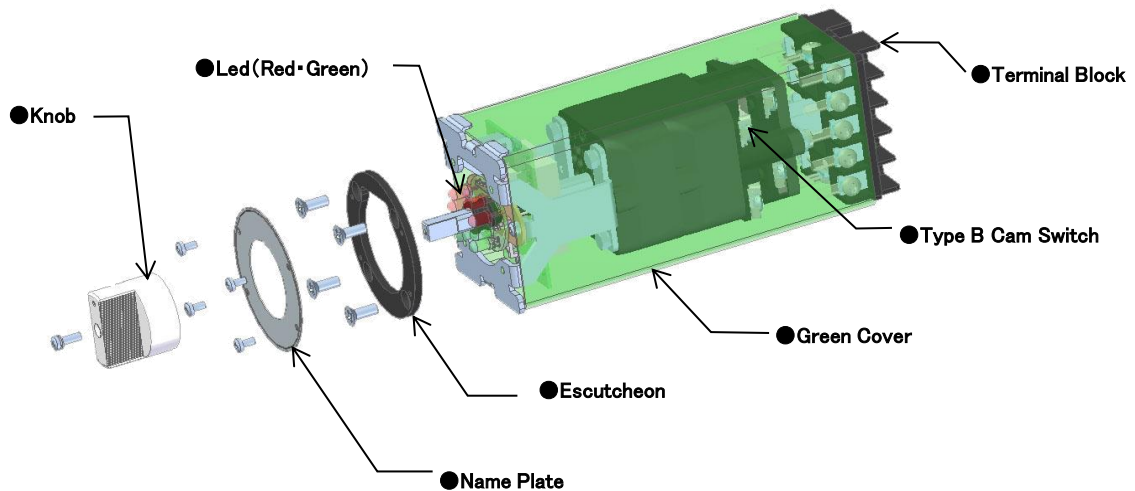


TYPE EB DISCREPANCY SWITCH



Structure



Specifications (Ratings, performance)

Specification	Silver Contact Point(Standard)	
Rated Insulation Voltage	250V	
Rated Current	10A	
Insulation Resistance	>100M Ω (500V megger)	
Contact Resistance	<50m Ω	
LED	Rated Voltage	AC/DC 24V、100V
	Power Consumption	2W
	Led Life	>100,000 Hour
Collision Resistance	10G	
Vibration Resistance	3G(3~33Hz)	
Storing Temperature Range	-40°C to 70°C	
Operating Temperature Range	-20°C to 60°C	
Operating Humidity Range	45% to 85%Rh	
Withstanding Voltage	AC 2,500V for 1 minute	
Withstanding Impulse Voltage	\pm 7,000V (1.2/50 μ s) 3 times	
Minimum Usage of Voltage and Current	※ 24V50mA (1.2VA)	
Short-Time Current	200A for 2 sec	
Switching Frequency	600 cycles / Hours	
Mechanical Operating Life	>800,000 cycles	
Electrical Operating Life	AC	>700,000 cycles
	DC	>300,000 cycles
Compliance Rating	IEC60947-5-1	

※Under Favorable Surrounding Conditions

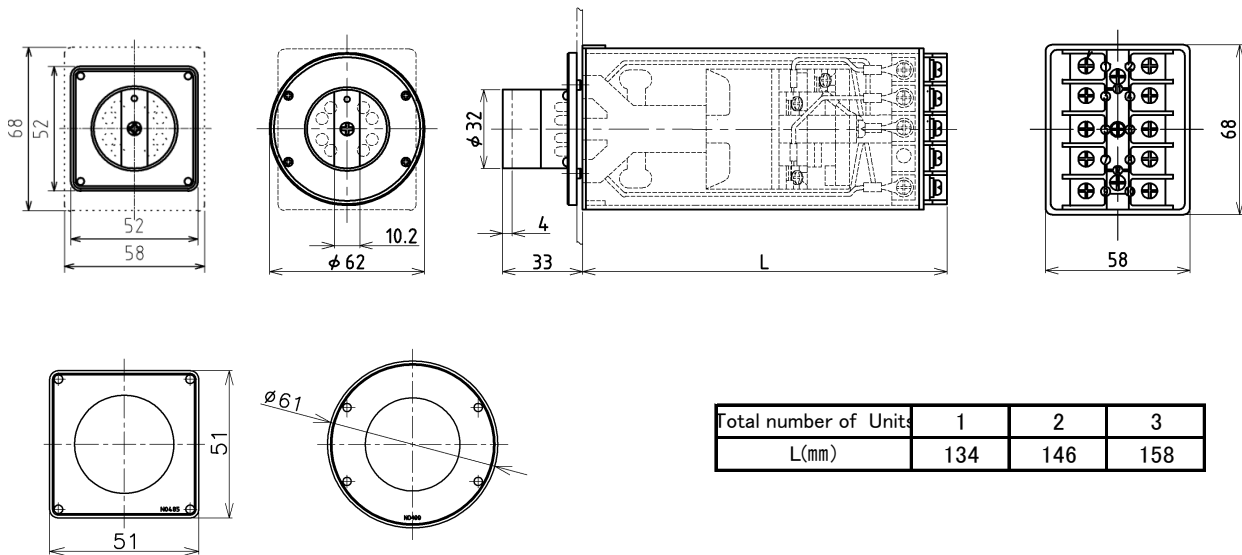
Rated Usage Voltage and Current (AC:power factor 0.4/DC:25ms time constant)

Rated Voltage(V)	DC		AC	
	Rated Current(A)			
	Resistans Load	Induction Load	Resistans Load	Induction Load
24	10	6	10	—
48	6	4	10	—
110	2.5	1.5	10	6.5
220	0.8	0.5	7.5	4.5
440	—	—	3	2

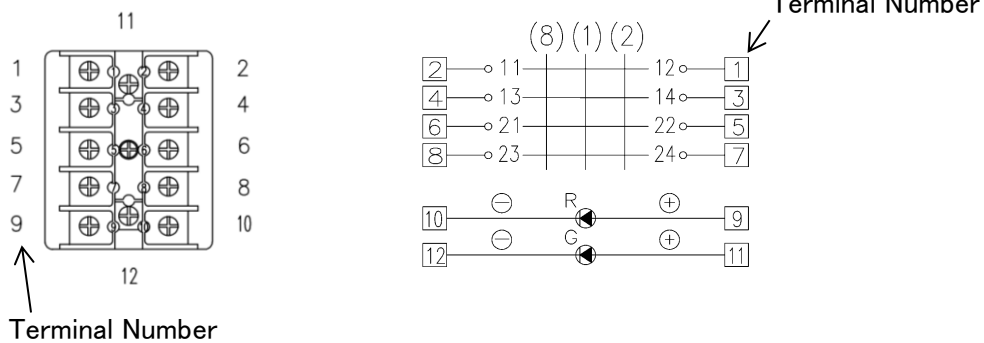
Rated Voltage(V)	DC	
	Rated Current(A)	
	2 Contact Point Load	2 Contact Point Induction Load
24	28	20
48	22	13
110	9	4.5
220	2.7	1.4

Operation Load Class: AC-12 and DC-12

Side View Dimension Drawing



Terminal number



Tightening Torque Values

Below are the torque values for screw tightening.

Parts	Size of Screw	Torque Values
Name Plate	M2.6	0.3N·m {3kgf·cm}
Knob	M3	0.7N·m {7kgf·cm}
Terminal Screw	M4	1.0N·m {10kgf·cm}
Escutcheon	M4	1.0N·m {10kgf·cm}